



## A Christmas Story – Full size replica

**PLEASE READ THOROUGHLY THE INSTRUCTIONS BEFORE TAKING THE LAMP APART.**

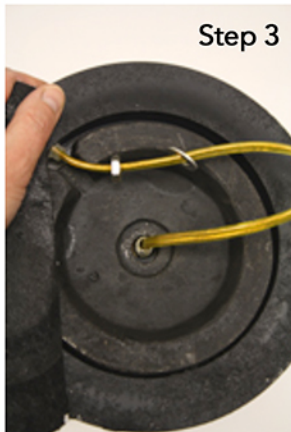
**NOTE: PLEASE MAKE SURE THE LAMP IS UNPLUGGED BEFORE CHANGING THE BULB.**



Step 1



Step 2



Step 3



Step 4

**Step #1 - 2:** Pull back the bottom base of the mat to reveal the nut and washer. Unloosen nut on bottom of lamp.

**Step #3 - 4:** Pull extra cord through hole (approx 6" to 8") and slide nut, and both washers onto the cord to allow the leg to be removed freely.



Step 5



Step 6



Step 7



Step 8



Step 9

**Step #5 - 6:** Pull the bulb holder and metal base at top of the leg away from the leg. You will need to turn back and forth gently to allow the threaded rod to come out. The rod is curved to fit through the leg.

**Step #7:** This will expose the bulb for replacement. Replace it with maximum 4 watt bulb.

**Step #8 - 9:** Pull cord slightly back through the bottom of the shoe and at the same time push the bulb holder and metal base back into the leg until the threaded rod goes back through the bottom of the shoe.



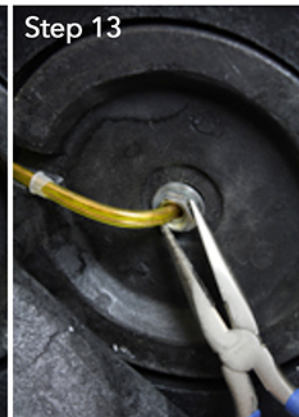
Step 10



Step 11



Step 12



Step 13



Step 14

**Step #10 - 12:** Place rod back through the lamp base and position the shoe flat on the base top. Place washers and nut back onto the threaded rod

**Step #13 - 14:** Tighten securely so that the top of the lamp does not move but is firmly in place. Pull cord back through hole so that the lamp will sit flatly on the table. Place mat back onto the bottom of the base.